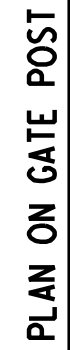
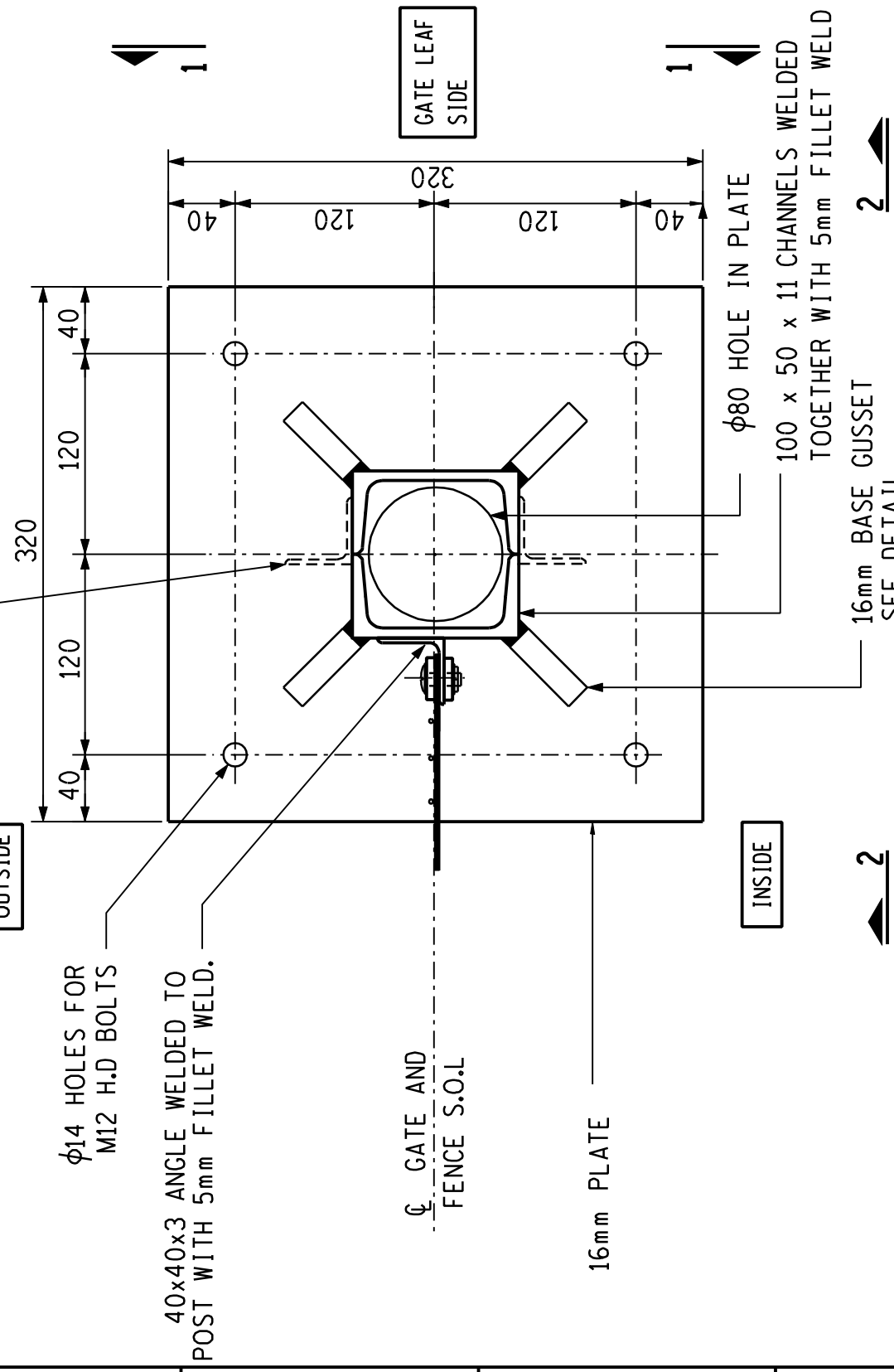
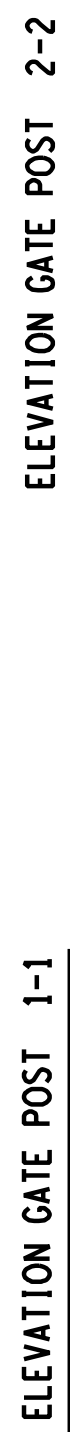
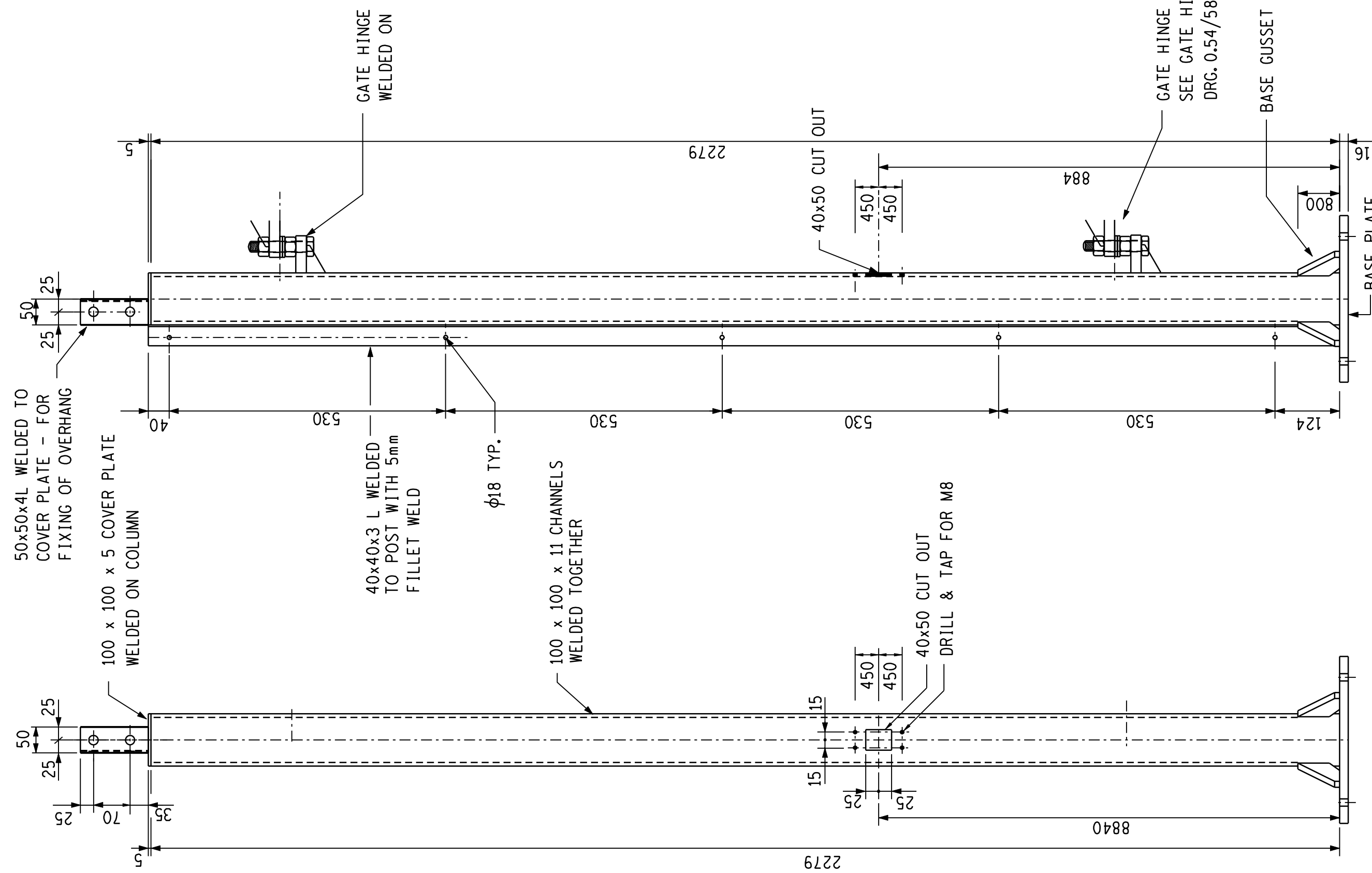
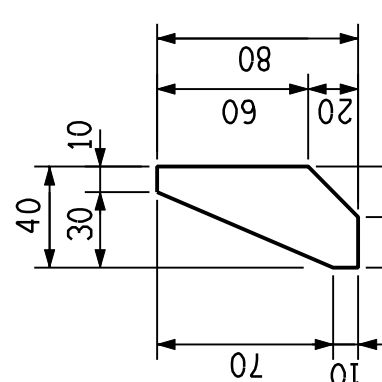
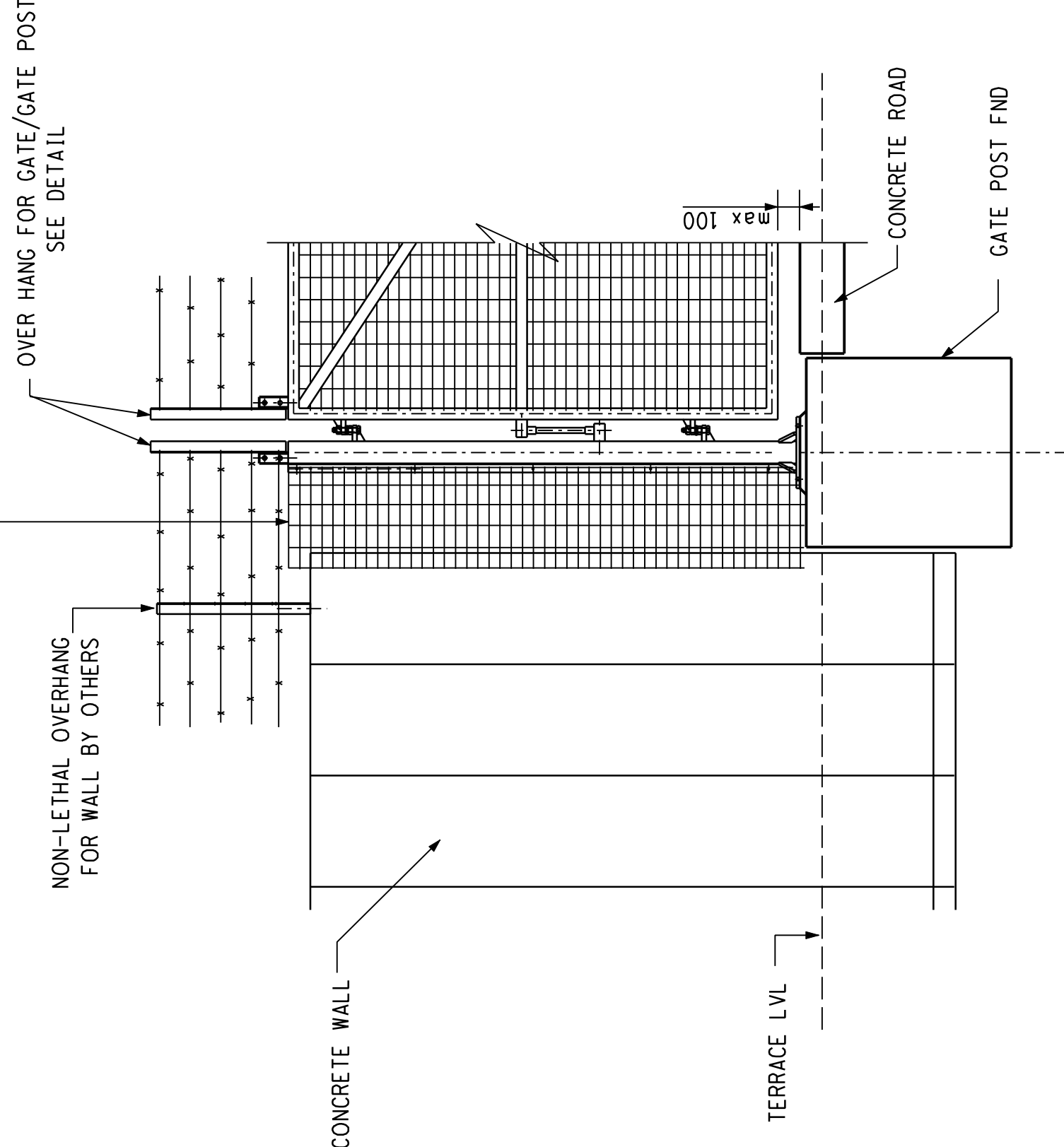
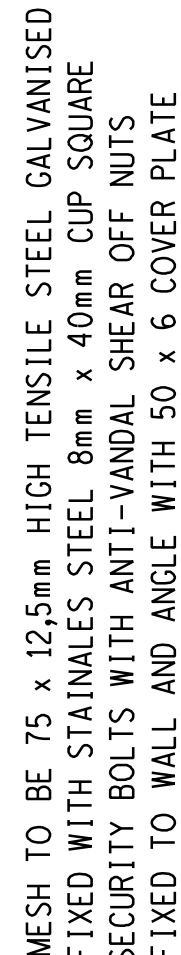



POST WIRING PROTECTION DETAIL



NOTES:

- .) ALL BOLTS, NUTS, WASHERS ETC. REQUIRED FOR ERECTION TO BE SUPPLIED BY THE CONTRACTOR.
- .) ALL STEEL TO BE GRADE 300WA, HOT DIPPED GALVANISED TO SABS ISO 1461
- .) ANY DAMAGE TO THE GALVANISED SURFACES SHALL BE PREPARED WITH AN APPROVED ZINC-METAL SPRAY OR INORGANIC ZINC-RICH PAINT COMPLYING WITH SABS 929, APPLICATION TO SUPPLIERS SPECIFICATIONS.
- .) ALL WELDING TO BE 5mm CONTINUOUS FILLET AND CARRIED OUT IN THE WORKSHOP BEFORE GALVANISING

X		REV		REVISION DESCRIPTION		BY		CHKD		AUTH		DATE		100mm/Yr		Y/Y		REFERENCE DRAWINGS	
<div>DESIGN APPROVED</div> <div>  </div> <div> <div>D.L.C.S.</div> <div>DATE 24.10.2002</div> <div>DESIGN CHECKED</div> <div>DATE 24.10.2002</div> <div>DBAL</div> <div>DRAWN BY</div> </div>																			
<div>LEVEL 1 INSTALLATION</div> <div> <div>2.3M HIGH SECURITY WALL</div> <div>WITH NON- LETHAL OVERHANG</div> <div>GATE POST AND OVERHANG DETAILS</div> </div>										<div>©</div> <div> <div>SHEET NUMBER</div> <div>3</div> </div> <div> <div>REVISION</div> <div>0</div> </div>									
<div>D.L.C.S.</div> <div>DATE 24.10.2002</div>										<div>0.54/5846</div>									
<div>SCALE</div> <div>1:1000</div>																			